

The PE 2100 Series is General Purpose Single Phase Single-Stage EMI Filters.



PE 2100



PE 2101



PE 2102



Description :

- General purpose filtering performance.
- Easy and fast chassis mounting.
- Rated currents from 6 to 100A
- Low leakage current and high quality components ensure the safety and reliability of filters.
- Optional medical versions (B type)
- Various terminal options: faston/screw/wire.

Typical Applications :

- Electrical and electronic equipment.
- Office automation equipment.
- Consumer goods.
- Datacom equipment.
- Household equipment.
- Medical equipment

Electrical Schematic :

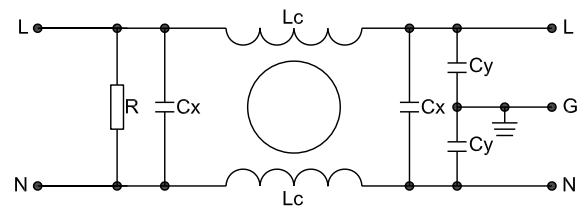




Fig 1

Specification :

Rated Voltage:	120/250 VAC
Rated Current:	6A~100A
Operating Frequency:	50/60Hz
Temperature Range:	HPF 25/085/21
Test Voltage (1min):	
Line to Ground:	2000 VAC
Line to Line:	1450 VDC

Filter Selection Table :

Filter	Rated current (A)	Rated voltage (V)	Leakage Current (mA)	Input/Output connections		Electrical Schematic	Dimension
							
PE2100-6-01	6	120/250	0.5			01	1
PE2100-10-01	10	120/250	0.5			01	1
PE2100-16-01	16	120/250	0.5			01	1
PE2100-10-06	10	120/250	0.5	06		1	2
PE2100-20-06	20	120/250	0.5	06		1	2
PE2100-30-06	30	120/250	0.5	06		1	2
PE2100-35-06	35	120/250	0.5	06		1	3
PE2100-50-06	50	120/250	0.5	06		1	3
PE2100-70-06	70	120/250	0.5	06		1	4
PE2100-100-06	100	120/250	0.5	06		1	4
PE2101-6-01	6	120/250	0.5			01	5
PE2101-10-01	10	120/250	0.5			01	5
PE2101-16-01	16	120/250	0.5			01	5
PE2102-6-01	6	120/250	0.5			01	6
PE2102-10-01	10	120/250	0.5			01	6
PE2102-16-01	16	120/250	0.5			01	6
PE2102-20-01	20	120/250	0.5			01	6

Mechanical Dimension:

(Unit:mm)

All dimensions in mm; 1 inch=25.4mm

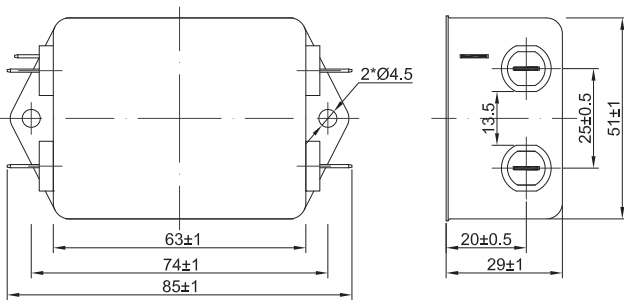


Fig 1

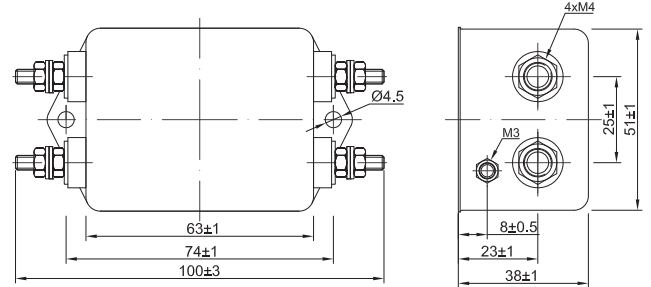


Fig 2

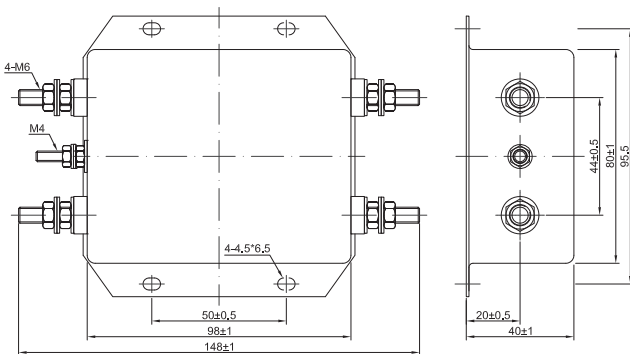


Fig 3

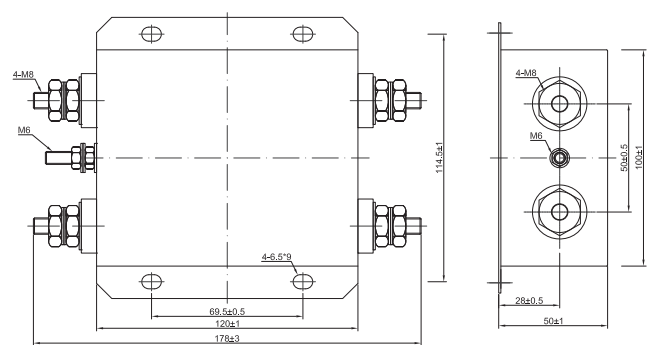


Fig 4

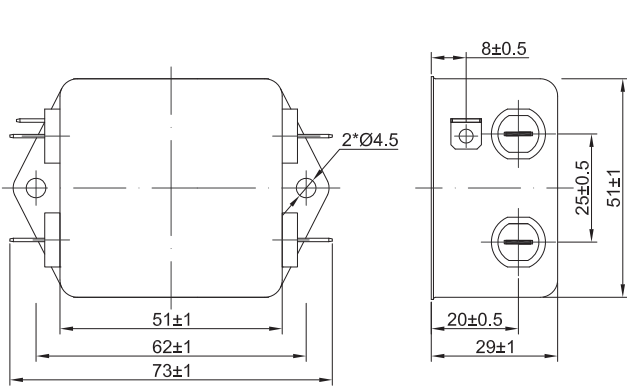


Fig 5

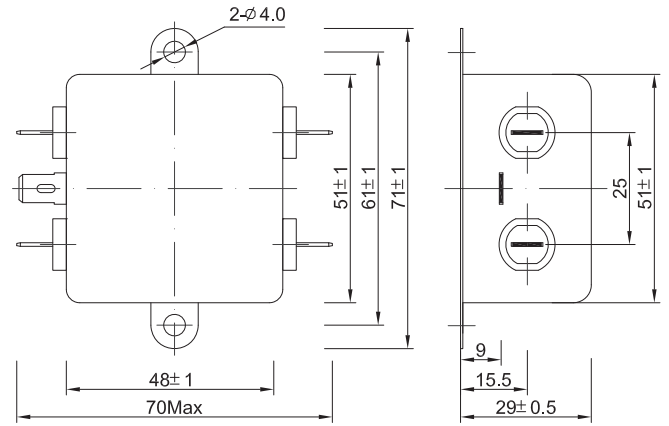
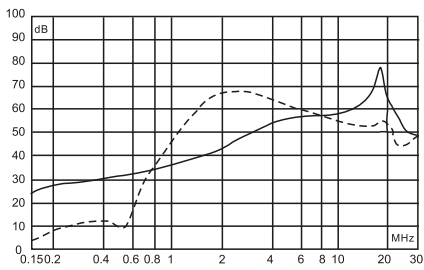


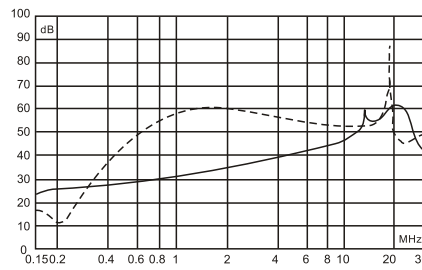
Fig 6

Insertion Loss in dB:

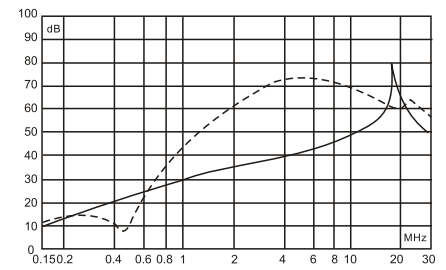
(Measured in 50Ω system , as IEC/CISPR NO.17)



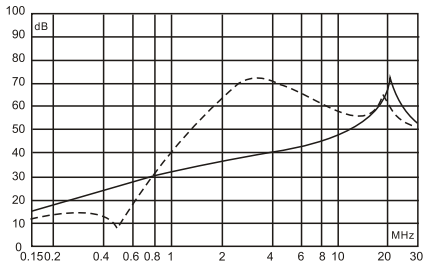
6A



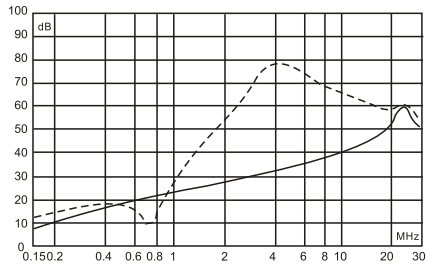
10A



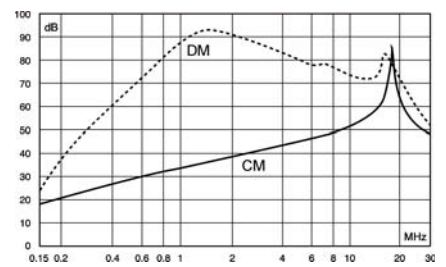
16A



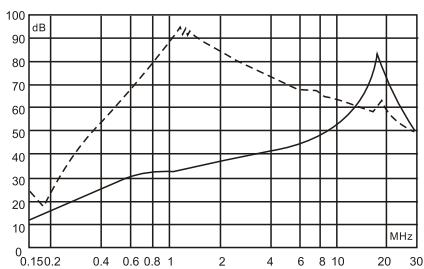
20A



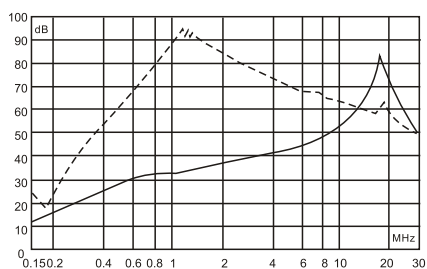
30A



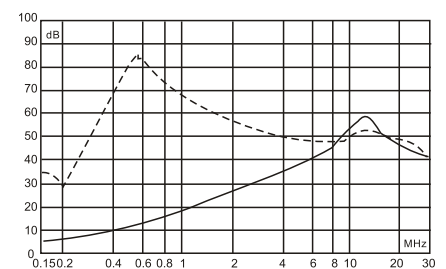
35A



50A



70A



100A