



产品说明 Product Features

信号滤波器品种规格多，电路结构新颖
Various specification available,
fresh circuit structure

带内损耗小，带外损耗大
Low leakage current within pass band.

安装方便
Easy to install

选型表 Filter selection table:

规格 Filter	额定电压 Rated Voltage	额定电流 Rated Current	线数 Lines	通带 Pass Band	适用范围 Applications	外形尺寸 Dimension
PESF-S201-1	250VDC	0.3A	2	4KHz	电话、传真、交直流开关信号 Telephone, fax and AC/DC switch signal	Fig 1
PESF-S204-1				20KHz		
PESF-S202-2 (*)	250VDC	2A	2	100KHz	交直流开关信号、空调控制、 消防语音广播、门禁 AC/DC switch signal, air-conditioning control, fire,voice,radio and door access control system,	
PESF-S103-1	100VDC	1A	1	6MHz	视频信号 Video signal control	Fig 2
PESF-S203-1	100VDC	1A	2	6MHz	特种电话、消防报警、监控控制、 门禁 Emergency telephone, fire alarm, monitor and door access control system	Fig 3

注：以上信号滤波器可以满足国军标C,D级屏蔽房和各类吸波暗室的屏蔽要求。

* 如果控制线数量超过2根或电流大于10A，订货时请注明具体的控制线数量与电流大小。

Remarks: Above signal filters are also available for various anechoic chamber and shielded enclosure,compliance with National Military Class C and D shielding performance requirements.

* it also available for control lines more than 2 cable or rated current more than 2A,please tell us your requirements.

外形尺寸 Mechanical Dimension (mm)

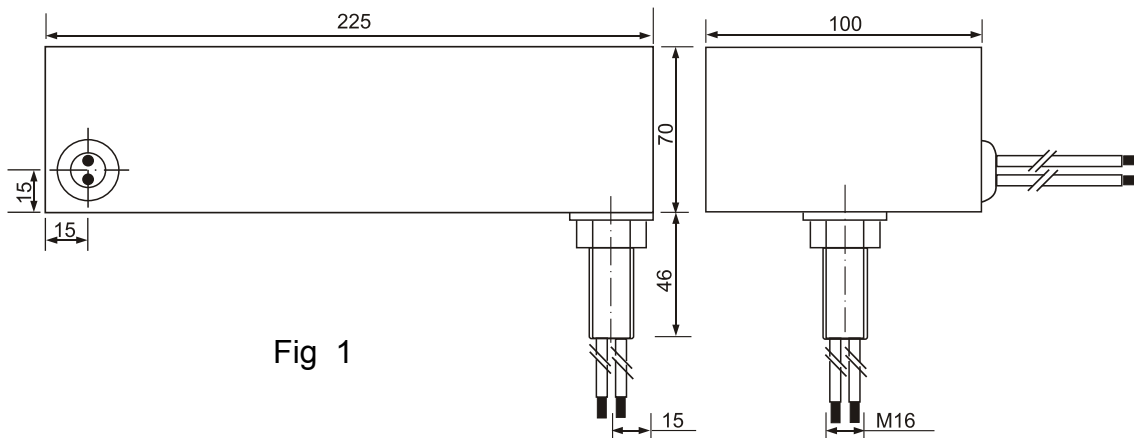


Fig 1

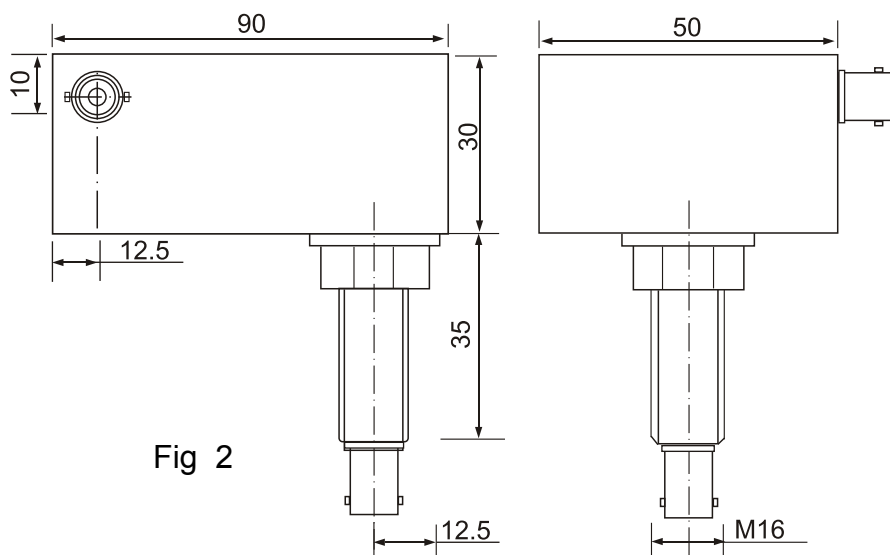


Fig 2

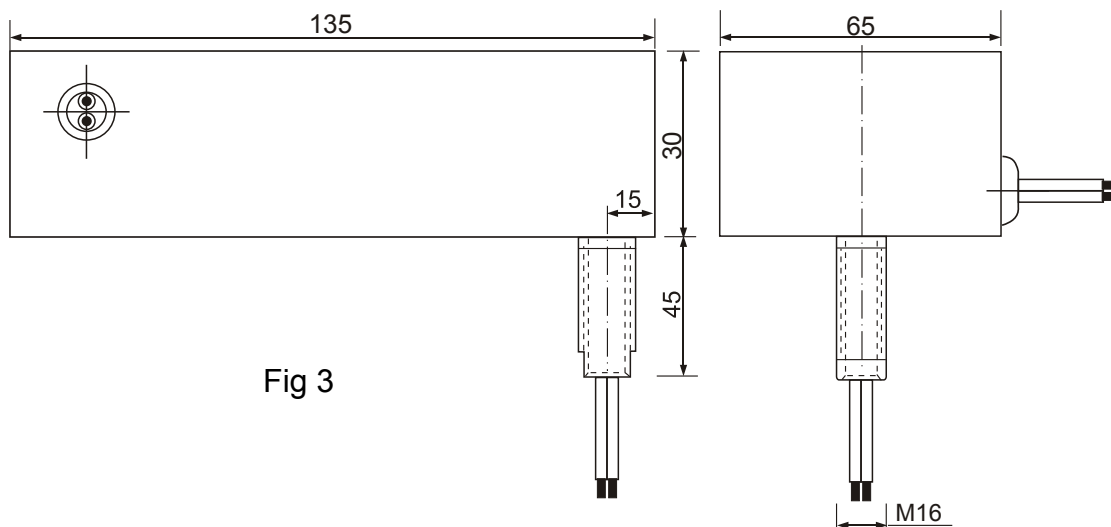


Fig 3

所有尺寸单位为mm, All dimensions in mm; 1 inch=25.4mm